

File No.	File version	confidential
	V1.0	

F3746 LTE/TD-SCDMA Dual-SIM WIFI ROUTER TECHNICAL SPECIFICATION

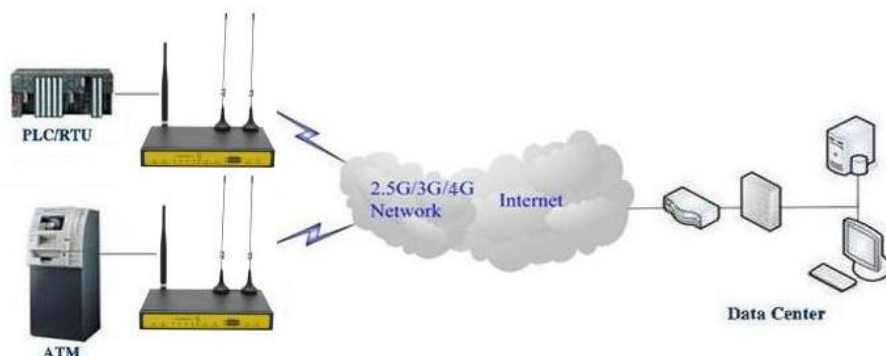


General

F3746 LTE/TD-SCDMA Dual-SIM WIFI ROUTER is a kind of cellular terminal device that provides large data transfer function by public LTE/TD-SCDMA network.

It adopts high-powered industrial 32-bits CPU and embedded real time operating system. It supports RS232 (or RS485/RS422), Ethernet and WIFI port that can conveniently and transparently connect one device to a cellular network, allowing you to connect to your existing serial, Ethernet and WIFI devices with only basic configuration.

It has been widely used on M2M fields, such as intelligent transportation, smart grid, industrial automation, telemetry, finance, POS, water supply, environment protection, post, weather, and so on.



Product Feature

Design for Industrial Application

- ◆ High-powered industrial cellular module
- ◆ High-powered industrial 32bits CPU
- ◆ Adapt dual SIM design to ensure the stable and reliable of the router
- ◆ Support low-consumption mode, including sleep mode, scheduled online/offline mode, scheduled power-on/power-off mode(optional)
- ◆ Housing: iron, providing IP30 protection.
- ◆ Power range: DC 5~36V

Stability and Reliability

- ◆ Support hardware and software WDT
- ◆ Support auto recovery mechanism, including online detect, auto redial when offline to make router always online
- ◆ Ethernet port: 1.5KV magnetic isolation protection

- ◆ RS232/RS485/RS422 port: 15KV ESD protection
- ◆ SIM/UIM port: 15KV ESD protection
- ◆ Power port: reverse-voltage and overvoltage protection
- ◆ Antenna port: lightning protection(optional)

Standard and Convenience

- ◆ Support standard RS232(or RS485/RS422), Ethernet and WIFI port that can connect to serial, Ethernet and WIFI devices directly
- ◆ Support standard WAN port and PPPOE protocol that can connect to ADSL directly
- ◆ Support intellectual mode, enter into communication state automatically when powered

Xiamen Four-Faith Communication Technology Co., Ltd.

Add: J1-J3, 3rd Floor, No. 44, Guanri Road, Software Park, Xiamen, China Zip Code: 361008
<http://www.fourfaith.com> Tel: +86 592-6300326, 6300325, 6300324 Fax: +86 592-5912735

- ◆ Provide management software for remote management
- ◆ Support several work modes
- ◆ Convenient configuration and maintenance interface(WEB or CLI)

High-performance

- ◆ Support master card and smart card double link switching function
- ◆ Support multiple WAN access methods, including static IP, DHCP, L2TP, PPTP,PPPOE,2G/3G/4G
- ◆ Support double link backup between LTE/TD-SCDMA and WAN(PPPOE, ADSL) (optional)
- ◆ Support VPN client(PPTP, L2TP, OPENVPN, IPSEC and GRE)(only for VPN version)
- ◆ Support VPN server(PPTP, L2TP, OPENVPN, IPSEC and GRE)(only for VPN version)
- ◆ Support local and remote firmware upgrade,import and export configure file
- ◆ Support NTP, RTC embedded
- ◆ Support multiple DDNS provider service
- ◆ Support VLANs, MAC Address clone, PPPoE Server

- ◆ WIFI support 802.11b/g/n. support AP, client, Adhoc, Repeater, Repeater Bridge and WDS(optional) mode
- ◆ WIFI support WEP,WPA,WPA2 encryption,Support RADIUS authentication and MAC address filter
- ◆ Support multi online trigger ways, including SMS, ring and data. Support link disconnection when timeout
- ◆ Support APN/VPDN
- ◆ Support DHCP server and client, firewall, NAT, DMZ host , URL block, QoS, ttraff,statistics, real time link speed statistics etc
- ◆ Full protocol support , such as TCP/IP, UDP, ICMP, SMTP(optional), HTTP, POP3(optional), OICQ(optional), TELNET, FTP(optional), SNMP, SSHD, etc
- ◆ Schedule Reboot, Schedule Online and Offline,etc

Product Specification

Cellular Specification

Cellular Module	Industrial cellular module
Cellular Module	Industrial cellular module
Standard and Band	LTE TDD 2600/1900/2300MHz(Band 38/39/40), 800/1400/1800MHz(Band 27/61/62)(optional) TD-SCDMA 2010/1900MHz(A/F frequency band, Band 34/39) GSM /GPRS/EDGE 900/1800/1900MHz
Bandwidth	LTE TDD: Download speed 61Mbps, Upload speed 18Mbps TD-HSPA+: Download speed 4.2Mbps, Upload speed 2.2Mbps TD-HSPA: Download speed 2.2Mbps, Upload speed 2.2Mbps
TX power	<23dBm
RX sensitivity	<-97dBm

WIFI Specification

Item	Content
Standard	IEEE802.11b/g/n
Bandwidth	IEEE802.11b/g: 54Mbps (max) IEEE802.11n: 150Mbps (max)
Security	WEP, WPA, WPA2, etc

Xiamen Four-Faith Communication Technology Co., Ltd.

Address: J1-J3, 3rd Floor, No. 44, Guanri Road, Software Park, Xiamen, China Zip Code: 361008
<http://www.fourfaith.com> Tel: +86 592-6300326, 6300325, 6300324 Fax: +86 592-5912735

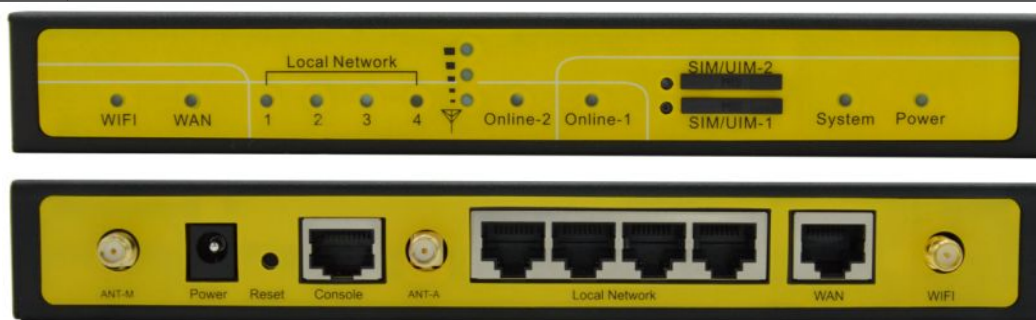
	WPS (optional)
TX power	20dBm(11n),24dBm(11g),26dBm(11b)
RX sensitivity	<-72dBm@54Mbps

Hardware System

Item	Content
CPU	Industrial 32bits CPU
FLASH	16MB(Extendable to 64MB)
SDRAM	128MB

Interface type

Item	Content
WAN	1 10/100 Mbps WAN port(RJ45), auto MDI/MDIX, 1.5KV magnetic isolation protection
LAN	4 10/100 Mbps Ethernet ports(RJ45), auto MDI/MDIX, 1.5KV magnetic isolation protection
Serial	1 RS232(or RS485/RS422) port, 15KV ESD protection Data bits: 5, 6, 7, 8 Stop bits: 1, 1.5(optional), 2 Parity: none, even, odd, space(optional), mark(optional) Baud rate: 2400~115200 bps
Indicator	"Power", "System", "Online", "Alarm", " Local Network ", "WAN", "WIFI", "Signal Strength"
Antenna	Cellular: 2 Standard SMA female interface, 50 ohm, lightning protection(optional) WIFI: Standard SMA male interface, 50 ohm, lightning protection(optional)
SIM/UIM	Standard 3V/1.8V user card interface, 15KV ESD protection
Power	Standard 3-PIN power jack, reverse-voltage and over-voltage protection
Reset	Restore the router to its original factory default settings



Power supply

Item	Content
Standard Power	DC 12V/1.5A
Power range	DC 5~36V

Consumption

Working condition	Consumption
-------------------	-------------

Standby	281~328mA@12VDC
Communication	322~563mA@12VDC
Schedule Shutdown	2.57~4.2mA@12DVC

Physical Characteristics

Item	Content
Housing	Iron, providing IP30 protection
Dimensions	207x135x28 mm
Weight	790g

Environmental Limits

Item	Content
Operating Temperature	-35~+75°C (-31~+167°F)
Storage Temperature	-40~+85°C (-40~+185°F)
Operating Humidity	95% (unfreezing)